

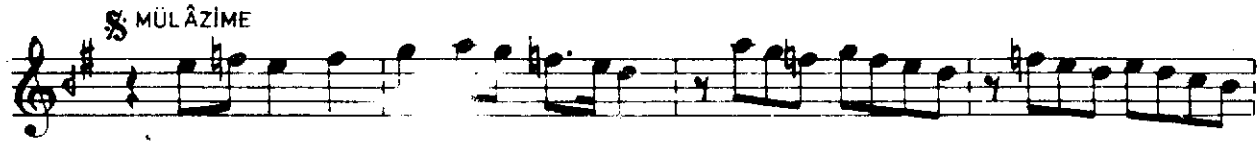
EVC-HÜZÎ PEŞREVİ

USÛLÜ: MUHAMMES

MÜZİK: GAZİ GİRAY HAN II

J. 80

HÂNE: 1



T R Y
Geik Daire
T S M



A musical score for a piece titled "Geik Daire" in the "T S M" style. The score is written on ten staves, each beginning with a treble clef and a key signature of one sharp (F#). The notation includes various rhythmic values such as eighth, sixteenth, and thirty-second notes, as well as rests. There are two repeat signs (double bar lines with dots) on the second and sixth staves. Above the second repeat sign is the text "HANE:3", and above the sixth repeat sign is "HANE:4". The score concludes with a final repeat sign on the tenth staff, followed by the word "yavga" written vertically.